

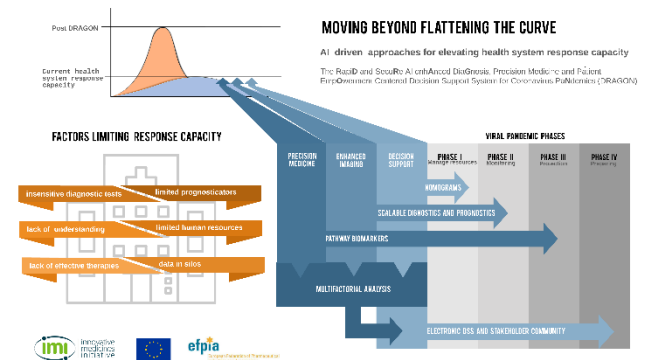
Background

DRAGON is an Innovative Medicines Initiative (IMI) project which started on 1 October 2020, in the middle of the second wave of the COVID-19 pandemic, and will run for 3 years. The project is coordinated by the University of Maastricht with Radiomics as the Project Lead. The partners include high-tech, small and medium sized enterprises, academic research institutes, together with the patient centred organisation, European Lung Foundation (ELF), and healthcare professional society, European Respiratory Society (ERS). DRAGON is built on the ambition to increase the capacity of health systems, speed up the pace of research and innovation, and empower citizens during a pandemic. Application of advanced approaches within DRAGON—such as artificial intelligence (AI), decision support tools and molecular profiling—will help to realize these ambitions and are structured as the following four main objectives:

1. Deliver scalable diagnostic and prognostic models based on imaging that are more efficient and accurate for supporting medical decision making and resource planning
2. Accelerate new therapy development by adding molecular profiling and AI enhanced analysis to the multi-faceted scalable diagnostic and prognostic models
3. Deploy a federated machine learning system to support fast track innovation by enabling continued data driven improvement while expanding innovation capacity by building a platform to efficiently share and analyse data at scale
4. Engage stakeholders in the development of a patient empowerment centred decision support system that considers the entire patient journey

The DRAGON stakeholder community acts as a conduit to create a thriving innovation ecosystem.

More information about DRAGON can be found on the [website](#).



Stakeholder Community

This document establishes the process for an organisation or individual to become a member of the DRAGON stakeholder community.

A member of the stakeholder community is not a DRAGON project partner. Only DRAGON partners possess specific rights and responsibilities related to the DRAGON project. DRAGON partners establish and govern its stakeholder community and participate in related activities with members.

The DRAGON stakeholder community can include: partners, organisational members (through organisational representatives) and individual members.

Governance

The DRAGON Executive Committee manages the stakeholder community. Partner BioSci Consulting is the dedicated point of contact for members.

All requests or recommendations by members are welcome and should be sent to the point of contact. Adoption of requests or recommendations lies at the discretion of the DRAGON Executive Committee.

Members that act in such a way as to damage the interests or reputation of the DRAGON project, may be removed from membership of the DRAGON

stakeholder community by the DRAGON Executive Committee.

A member may resign at any time by sending a written notice to the point of contact. The same process applies to any changes in membership.

The membership terms of reference are subject to change. Members will be informed of changes in a timely manner by the point of contact.

This document is not intended to and does not create any legally binding financial or other obligation on the part of the member (organization/individual), the DRAGON project or between the member and the DRAGON project.

Roles & Responsibilities of Members

Members can be organisations, either not-for-profit or for-profit, or individuals in fields—such as healthcare, public health, biomedical and other research, information and life sciences, oncology, and patient advocacy—that subscribe to the goals of the DRAGON project.

Organisational Members, may designate representatives, from its organisation, to represent itself in DRAGON stakeholder community activities.

Member benefits include:

- access to a member only platform and tools;
- networking opportunities;
- awareness of the project (updates, seminars, dissemination activities);
- consultations;
- multistakeholder interactions (e.g. roundtables, focus groups);
- member only events;
- member developed sub-projects in alignment with DRAGON roadmap;
- and collaboration on project incubators.

Members agree to receive communication related to the DRAGON project and its stakeholder community.

Participation in stakeholder community activities is voluntary. Activities will be effected progressively when deemed feasible by the DRAGON Executive Committee.

Consent Process

Membership to the DRAGON stakeholder community (organisational or individual) will be confirmed upon completion of the online [consent form](#) (by each organisational representative or individual member) which is required for GDPR compliance.

Following completion of the consent form, access will be granted to the DRAGON stakeholder community platform. One organisational representative is required to provide a short profile of their organisation (~1 paragraph).

For queries please contact BioSci Consulting (sapnasheth@biosciconsulting.com).