

SATURDAY
09 09 2023



ELF EUROPEAN
LUNG
FOUNDATION



ELF strategy

2023-2026



Mission

The European Lung Foundation brings patients and the public together with healthcare professionals to promote lung health

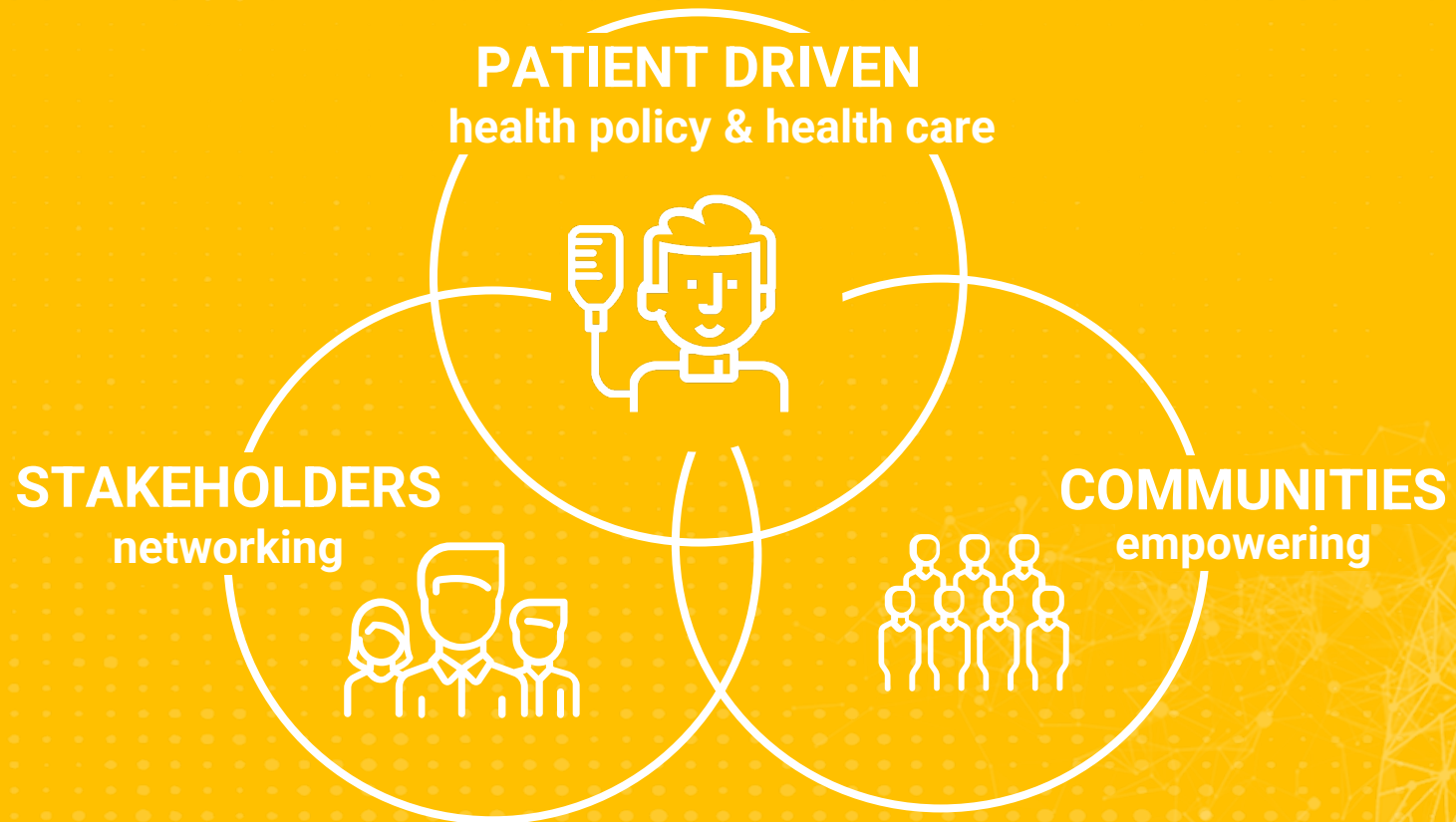


Vision

People living with lung conditions will be centrally involved in lung healthcare and research and everyone in Europe will have clear, reliable information they can trust about lung health and disease in their own language

Next day

Digital Health Transformation





The 6 goals from the previous ELF strategy have been revisited and refocussed for the next strategic period to ensure consistency and continuation of ELF's mission and vision.

**BE PATIENT
DRIVEN**

IMPROVE
KNOWLEDGE,
UNDERSTANDING
AND SUPPORT SELF
MANAGEMENT

INCREASE
RESOURCE
AND REACH

ENGAGE AND
EMPOWER

ENSURE GOOD
GOVERNANCE

HAVE A STRONG
AND DIVERSE
COMMUNITY AND
VOICE

ELF will ensure that patients and patient organisations drive its activities and that they are at the heart of all that it does

- ELF will put the patient at the centre of care
- ELF will support and consolidate its Patient Advisory Groups and build stronger connections with ERS Assemblies
- ELF will develop working groups on key cross-disease topics and comorbidities as the need arises
- ELF will promote inclusion for people from different backgrounds and who speak different languages
- ELF will strengthen relationships with national patient organisations through its network and via the IRC and continue to support patient involvement in the ERN-LUNG
- ELF will find ways to better engage with children and youth, and old people



ELF will further develop its health and science communication, and provide accurate and evidence-based information for patients and the public in new formats

- ELF will continue to offer all resources in the widest number of languages using novel technologies
- ELF will continue to provide timely evidence-based materials co-produced with patients and professionals
- ELF will continue to develop its digital offerings through its website and other approaches
- ELF will use more visual content, including new social media channels and video, to aid digital and health literacy, and shared decision making
- ELF will further increase its work in prevention via the Healthy Lungs for Life campaign
- ELF will work with the ERS Respiratory Channel to ensure content is available for people with lung conditions and the public



ELF will continue to lead in patient engagement and involvement to improve diagnostics, treatment and care in all lung conditions and promote self-management

- ELF will actively seek to grow patient communities by offering forums for support and a platform for patients to be part of
- ELF will seek to improve the diversity of patient involvement from all perspectives (background, gender, language)
- ELF, via Lungs Europe, will lead on EU applications and to provide opportunities for other organisations in its network
- ELF will work practically to improve health implementation (via use of guidelines etc.), focussing on digital/AI solutions
- ELF will develop more initiatives and sessions at the ERS Congress focussed on the priorities of patients
- ELF will promote good practice in patient involvement by providing advice and guidance
- ELF will work with its networks to provide mentoring to others who wish to become more involved and aid interaction



ELF will participate in and help build advocacy projects to advance the lung health agenda

- ELF will work with patients and patient organisations to develop statements on key issues
- ELF will collect and amplify patient stories and experiences to raise the profile of lung health and influence policy
- ELF will ensure that patients are at the heart of the MEP Lung Health Group and support Breathe Vision and the ELHG
- ELF, as Lungs Europe, will strengthen its office in Brussels to enable patients and patient organisations to be involved in EU projects and have a voice in Brussels
- ELF will ensure that all lung diseases have visibility and a voice individually and collectively
- ELF will ensure that the Healthy Lungs for Life project is optimised as a tool for awareness raising



To deliver on the ELF strategy, the governance of ELF must be effective and efficient for employees and collaborators

- ELF will continue to find novel and effective ways of collaboration with its network, committees and partners
- ELF will better organise its materials for all to access
- ELF will improve opportunities for patients and patient organisations to collaborate via its Patient Organisation Networking day and PAGs, but also using digital outreach more effectively
- ELF will continue to offer EPAP and more training and mentoring opportunities for patients and patient organisations
- ELF will build a healthy and work environment and will support continuous skill development
- ELF will encourage payment for patients getting involved in its projects



ELF must continue to diversify its income to ensure it can deliver on its aim to reach more people

- ELF will continue to produce short- and long-term fundraising plans
- ELF will ensure that it recognises the contribution of its volunteers and supporters in the long term and monitor their input into the organisation
- ELF will continue to offer services for patient input and communications/dissemination for EU projects
- ELF will support national partners to access EU supporting funding via IRC and other EU streams