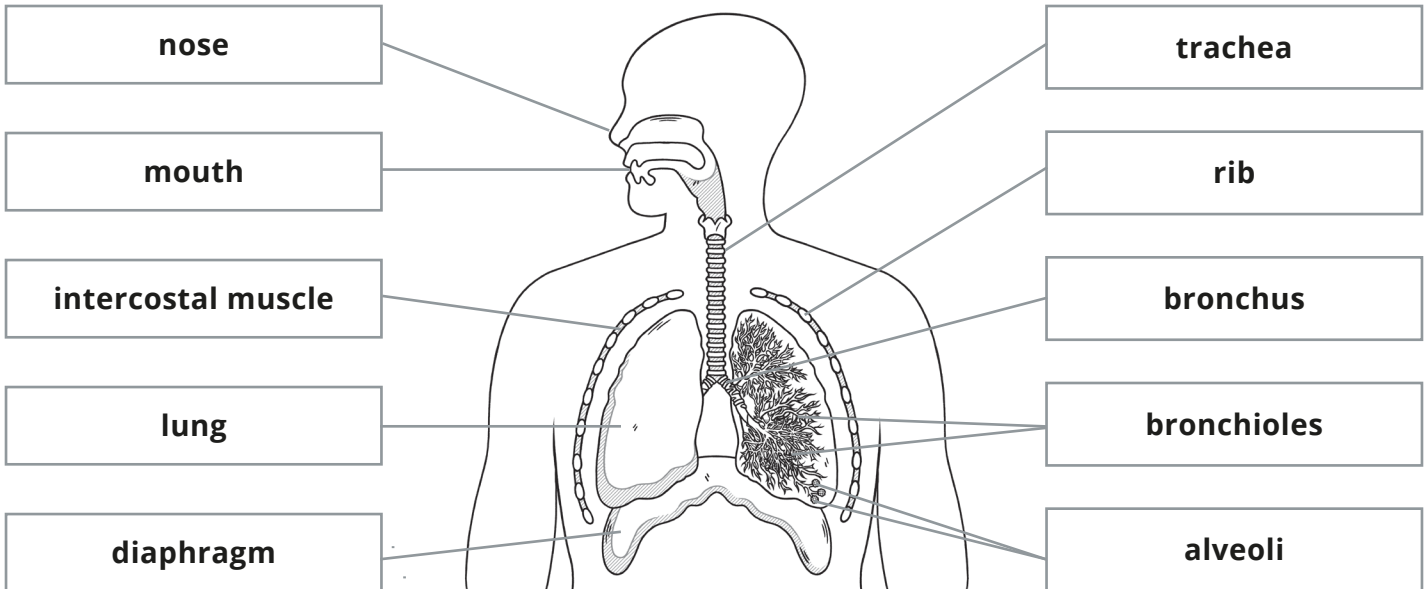


Human Gas Exchange System **Answers**

1. Label the structures in the human gas exchange system using the words in the box below.

alveoli	bronchioles	bronchus	diaphragm	intercostal muscle
lung	mouth	nose	trachea	rib



2. Read the descriptions then complete the table with the name of each part.

Name of Part	Description
trachea	The tube through which air travels from the mouth and nose to the lungs. Also known as the windpipe.
bronchi	The two tubes that lead from the trachea into the lungs.
bronchioles	Small tubes that lead from the bronchi to the alveoli.
alveoli	Tiny air sacs arranged in clusters throughout the lungs. They provide a large surface area for gas exchange to take place.
intercostal muscles	Muscles found between the ribs. They contract and relax to help move air into and out of the lungs.
diaphragm	A dome-shaped, flat muscle that sits underneath the ribcage. It contracts and relaxes to change the volume of the chest, causing the movement of air into and out of the lungs.
ribs	The bones that protect the organs in the chest.
lungs	A pair of organs through which air is moved in and out when we breathe.