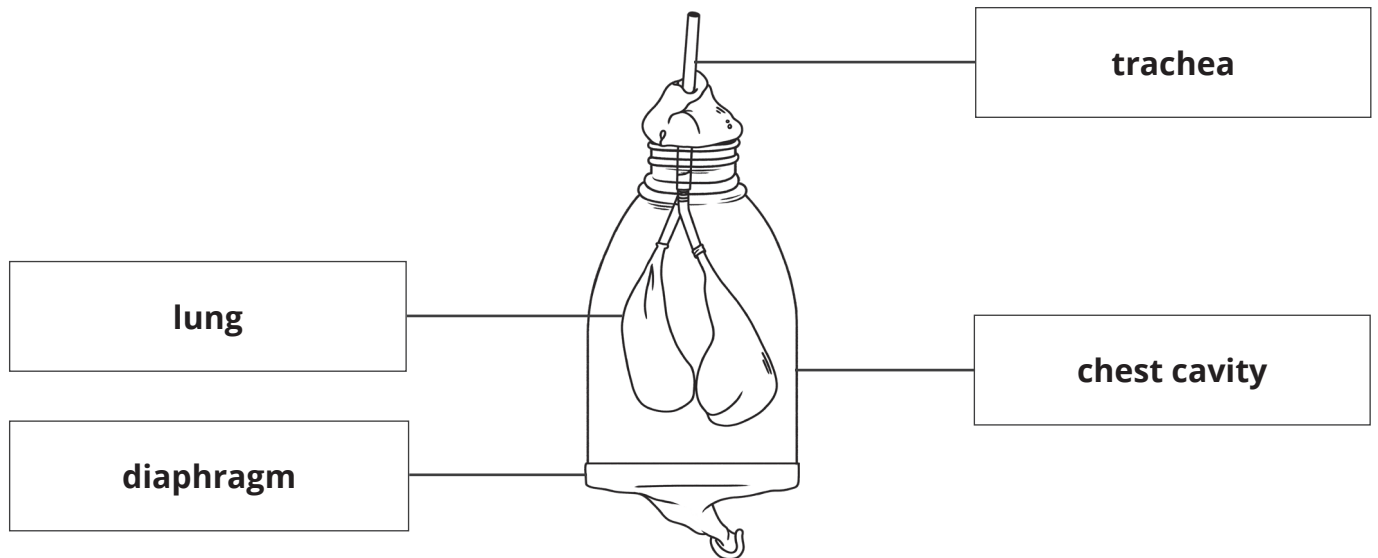


Modelling the Mechanism of Breathing **Answers**

1. Label the parts of the human gas exchange system represented by each part of the model below. Choose the answers from the box.

chest cavity diaphragm lung trachea



2. Pull down on the part of the model representing the diaphragm. This represents the diaphragm contracting. Then, push up on the part of the model representing the diaphragm. This represents the diaphragm relaxing.

Use your observations to complete the sentences below. Choose the answers from the box. Some words will be used more than once.

decreases increases into out of

When the diaphragm contracts, the volume of the chest cavity **increases**.

This **decreases** the pressure inside the chest cavity, causing air to move **into** the lungs.

When the diaphragm relaxes, the volume of the chest cavity **decreases**.

This **increases** the pressure inside the chest cavity, causing air to move **out of** the lungs.

3. Identify **one** feature of your model that worked well and one thing that could be improved.

Students' answers will vary. Students may refer to aspects of the model that they found easy/difficult to make or ways in which the model provides a good/poor representation of how the human breathing system works.