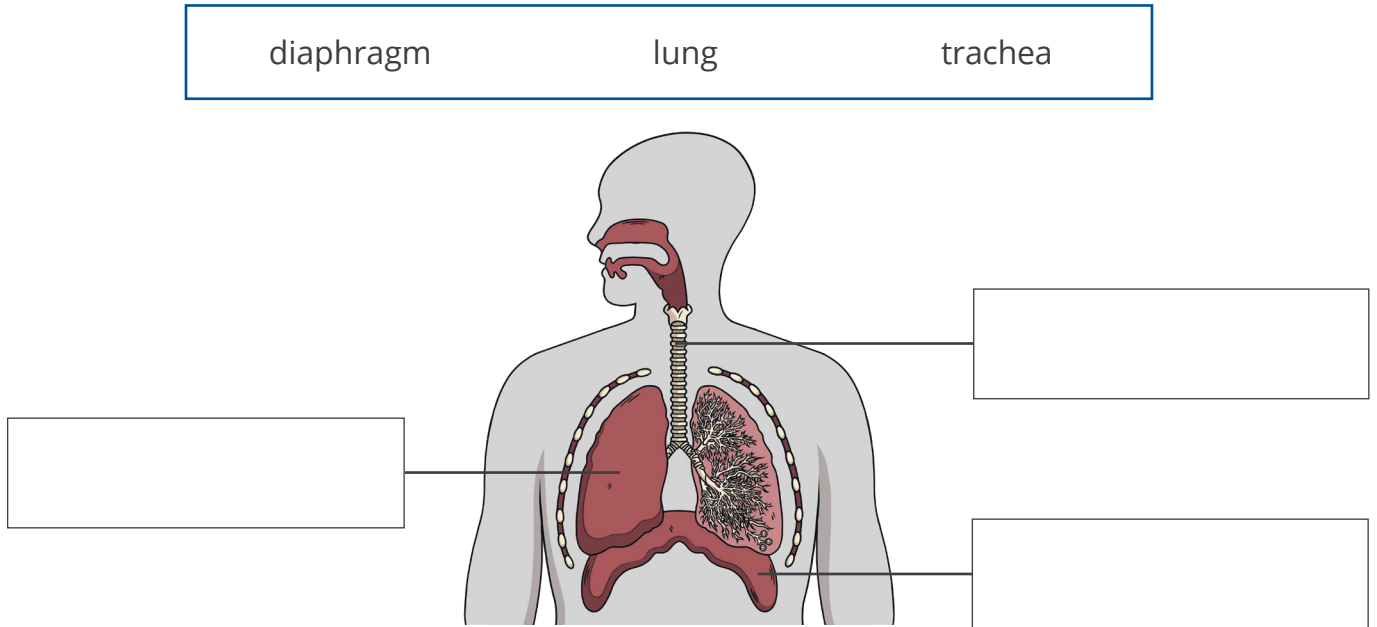


The Mechanism of Breathing

1. Label the parts of the human gas exchange system on the diagram below.



2. Draw one line from the name of each part to the corresponding part of the model.

trachea	balloon
lung	rubber sheet
diaphragm	tube

3. Describe what you observed when the rubber sheet was pulled down.

4. Describe what you observed when the rubber sheet was pushed up.

5. Complete the sentences to explain your observations. Use words from the box below. Some words may be used more than once.

decreased

increased

into

out of

pressure

When the rubber sheet was pulled down, the volume of the bell jar _____. This caused the _____ inside the bell jar to decrease. Air moved _____ the balloons because the pressure outside the bell jar was greater than the pressure inside the bell jar.

When the rubber sheet was pushed up, the volume of the bell jar _____ and the pressure inside the bell jar _____. This caused the air to be pushed _____ the balloons.

6. Describe **one** strength and **one** limitation of the bell jar model. A strength is something the model does well to represent the mechanism of breathing. A limitation is something that could be improved.

Strength: _____

Limitation: _____
