

### What is SOLACE?

Lung cancer is the leading cause of cancer deaths, yet survival rates improve significantly when it is detected early. Barriers like stigma, inequality, and healthcare access gaps prevent at-risk groups from benefiting from screenings.

The SOLACE project is driving change by:

- Facilitating and supporting the implementation of structured low-dose CT lung cancer screening programmes in Europe.
- Enhancing the quality of lung cancer screening across Europe.
- Improving accessibility, benefit-harm balance and cost effectiveness of lung cancer screening programmes.
- Bringing together all key stakeholders needed to design, plan and implement lung cancer screening in Member States on a sustainable basis.



37

partner organisations

15

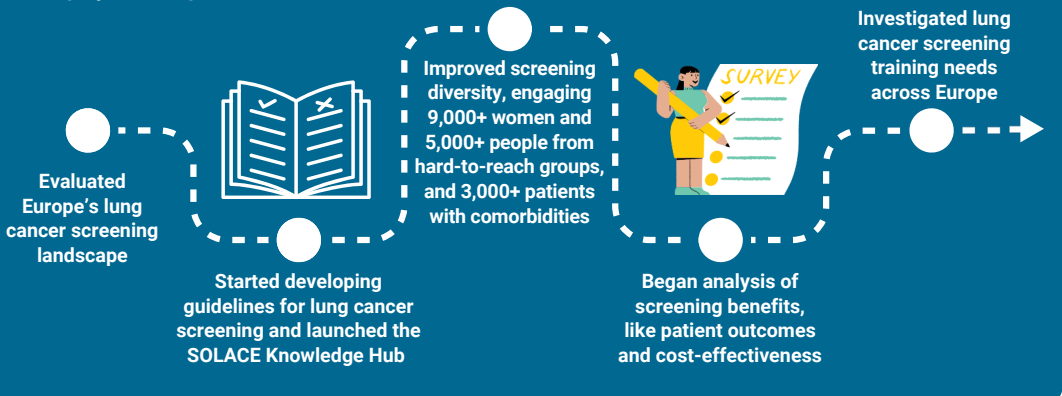
participating EU Member States

€12.1

million project budget

### What have we accomplished so far?

At the project's midpoint, we have:



Co-funded by the European Union

This project is co-funded under the EU4Health Programme 2021-2027 under grant agreement no. 101101187.

Scan to access the SOLACE website:



[solacelung.eu](https://solacelung.eu)

@EuroRespSoc @myESR @EuropeanLung @EIBIR\_biomed

@europeanrespiratorysociety @myESR @european\_lung

@solace\_project